



2015 MINTRAC Meat Inspection and Quality Assurance Conference

Electronic NVDs and Livestock Data Link

Jo Quigley, Meat & Livestock Australia

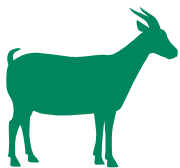


eNVD and LDL update

Jo Quigley

About MLA

- Meat and Livestock Australia Ltd (MLA) strives to be the recognised leader in delivering world class **research, development and marketing** outcomes that benefit Australian cattle, sheep and goat producers.
- Working in collaboration with the Australian Government and wider red meat industry, MLA's mission is to deliver value to levy payers by investing in initiatives that contribute to **producer profitability, sustainability and global competitiveness**.
- MLA is a ***producer owned, not-for-profit*** organisation and not an industry representative body.



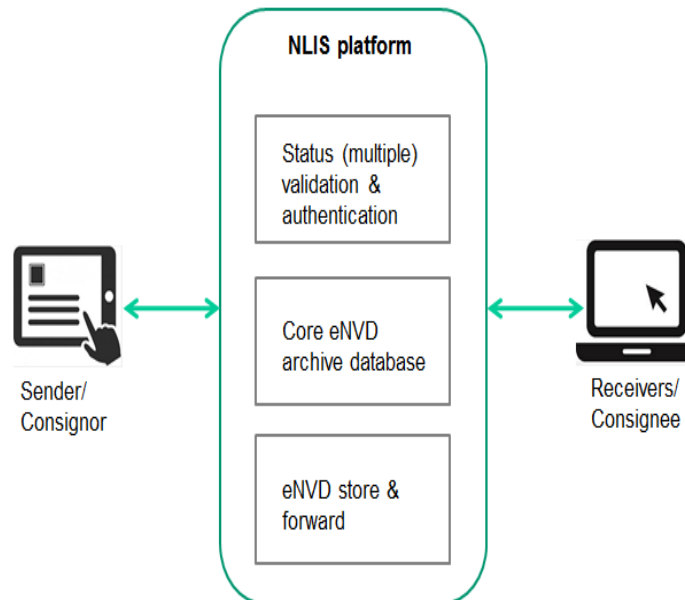
Drivers for an eNVD

- Research into the business case for an eNVD conducted in 2012
- Key benefits of an eNVD:
 - Removing costs associated with reprocessing through the chain
 - Efficient transfer of food safety information
 - Improved response times to changing market requirements
 - Ability to extend to include other declarations
- eNVD re-processing is estimated to cost industry more than \$6m per year
- Proof of concept developed and trialled in 2013/14

The image shows a sample of a National Vendor Declaration (NVD) form. The form is titled 'NATIONAL VENDOR DECLARATION' and includes sections for 'DECLARATION', 'INSPECTION', and 'SIGNATURE'. It contains various checkboxes and fields for recording information related to food safety and quality control. A large 'PROOF' watermark is visible across the center of the form.

How the eNVD will work

- Has been designed based on:
 - Data capture and storage standards
 - System business rules
 - Licensing of software providers
 - Central system for storage and retrieval of eNVDs (via NLIS)



eNVD field trials

- Commercial software systems evaluated in the field
 - Sheep, cattle, goats
 - Farm, feedlot, saleyard, processing
 - Good geographic spread
- Field trials will evaluate:
 - Effectiveness of business rules & data standards
 - Enhancements required prior to roll-out
- Co-funding through the MDC
- Trials to commence late October 2015
- Basic user interface will be developed to support the field trials



Next steps

- Completion of field trials
- Assessment of outcomes by SAFEMEAT
- Licensing of approved software providers
- Commercial eNVD software available for use
- March 2016 commencement



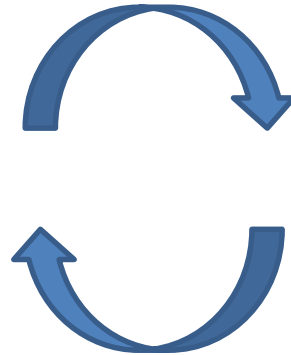
Carcase compliance

- Australian beef industry loses \$127 - \$138 million per annum, due to:
 - Carcase downgrades (discounts) (\$51m pa)
 - Carcase condemnns (\$64m pa)
 - Animal health and disease issues (\$12m - \$49m pa)



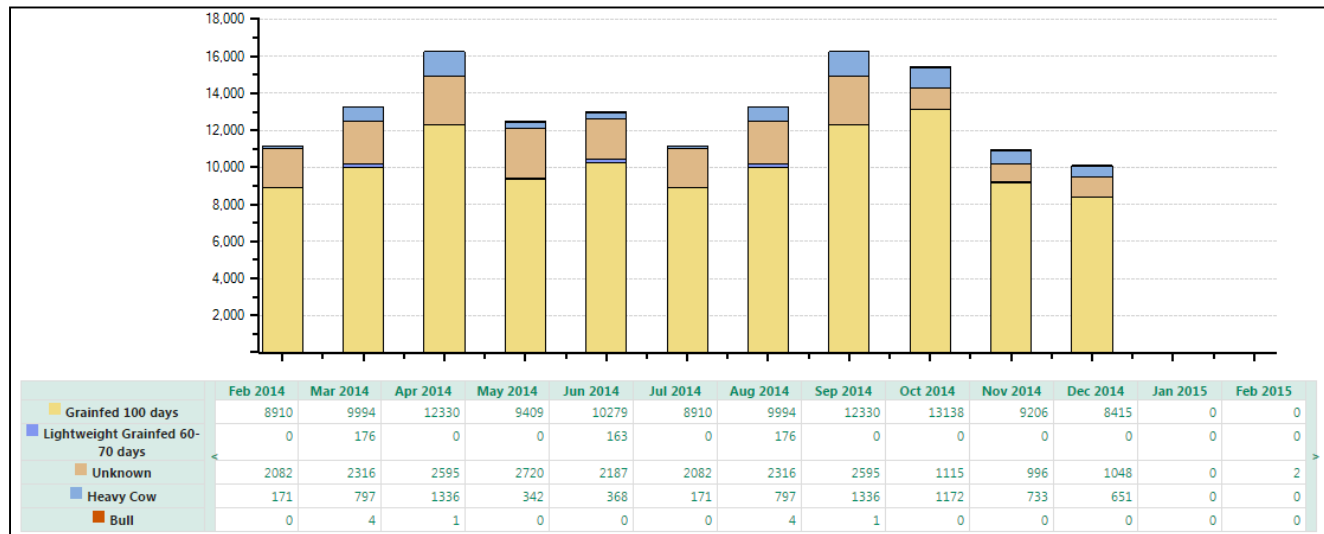
Livestock Data Link

- An initiative that aims to enhance the exchange and utilisation of carcase performance information by businesses in the red meat industry

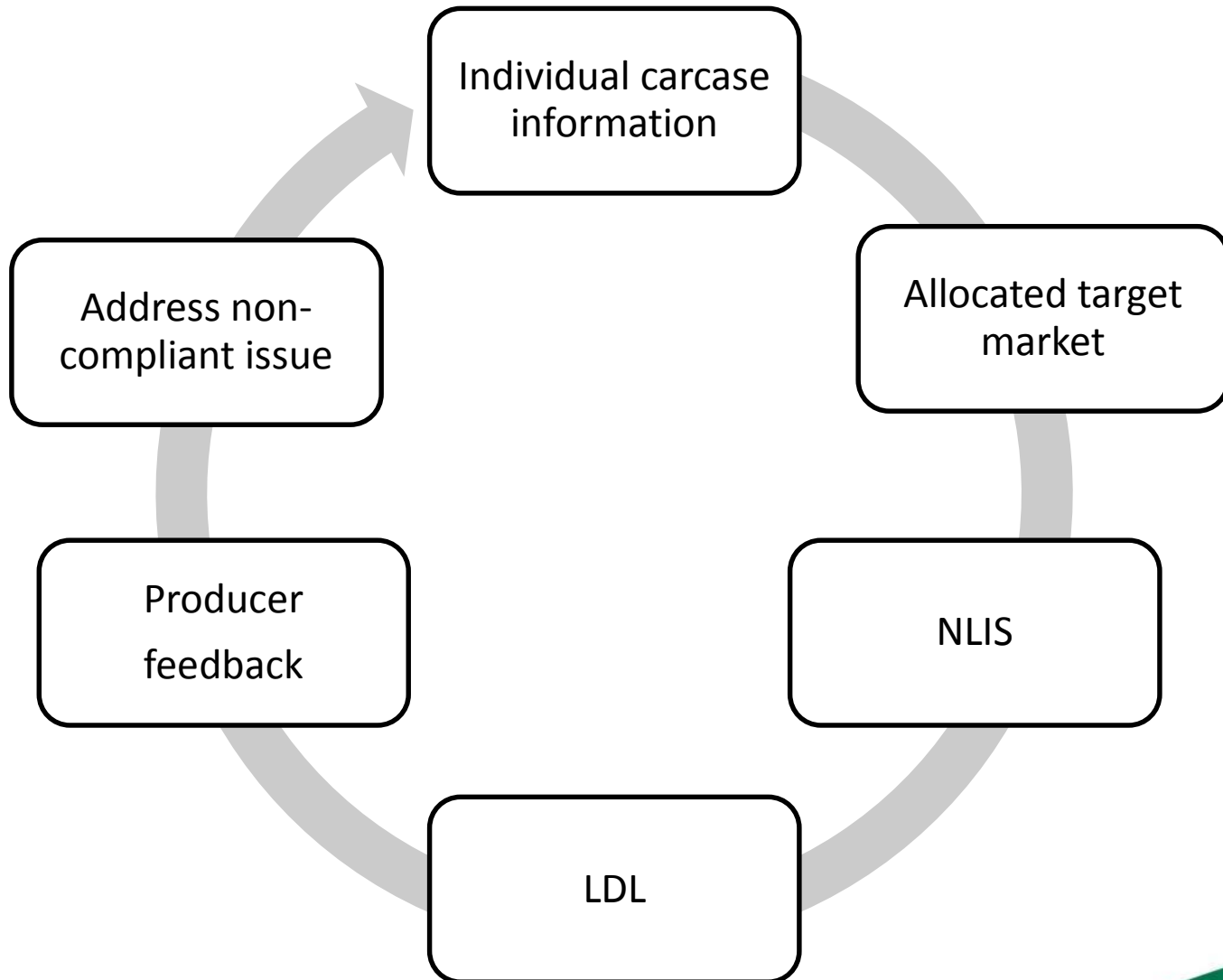


Livestock Data Link

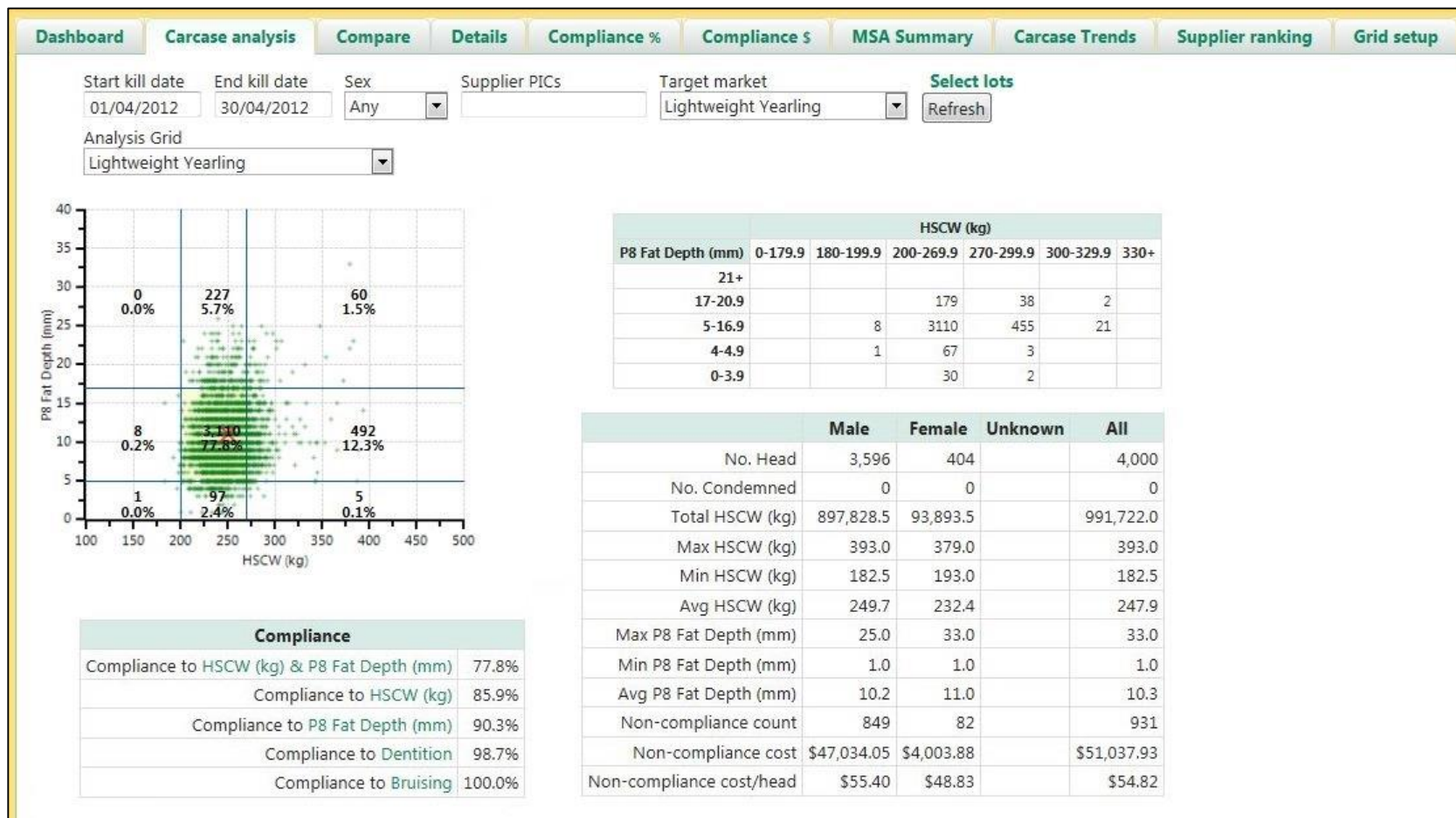
- Enhanced carcase feedback and reporting system
- Identifies opportunities to improve compliance to market specifications
- Supports business management decisions by offering solutions to improve performance



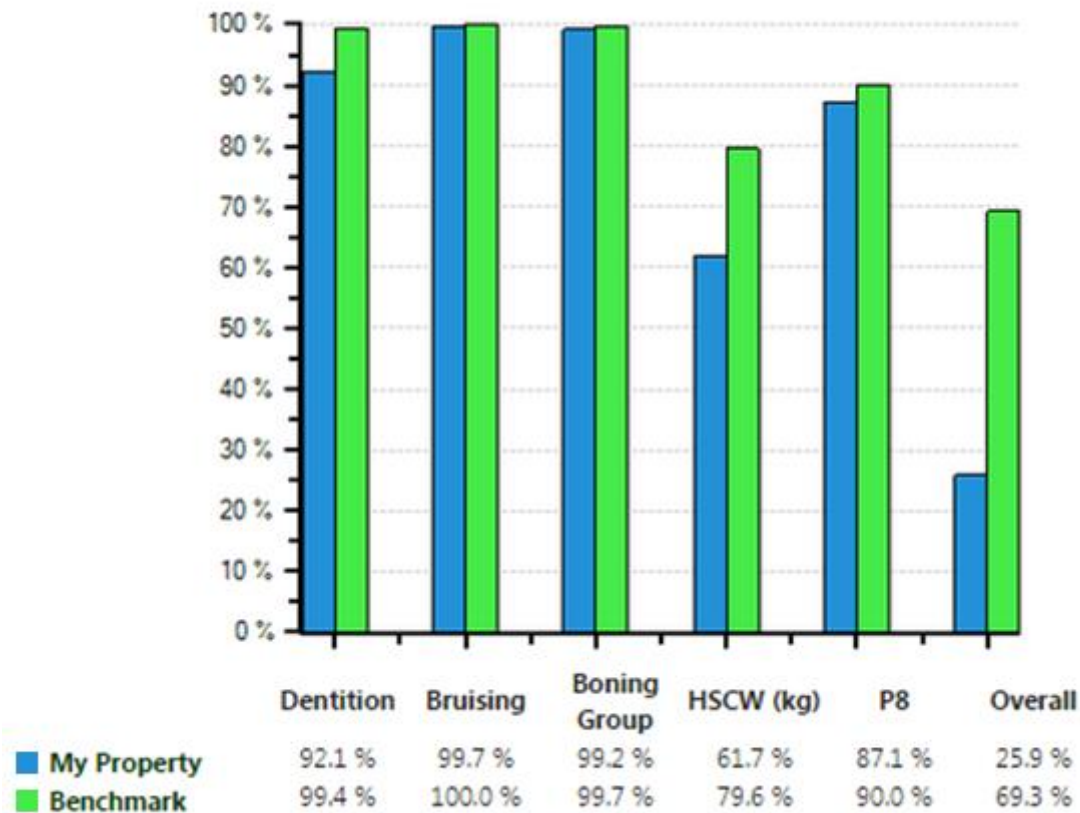
How does LDL work?



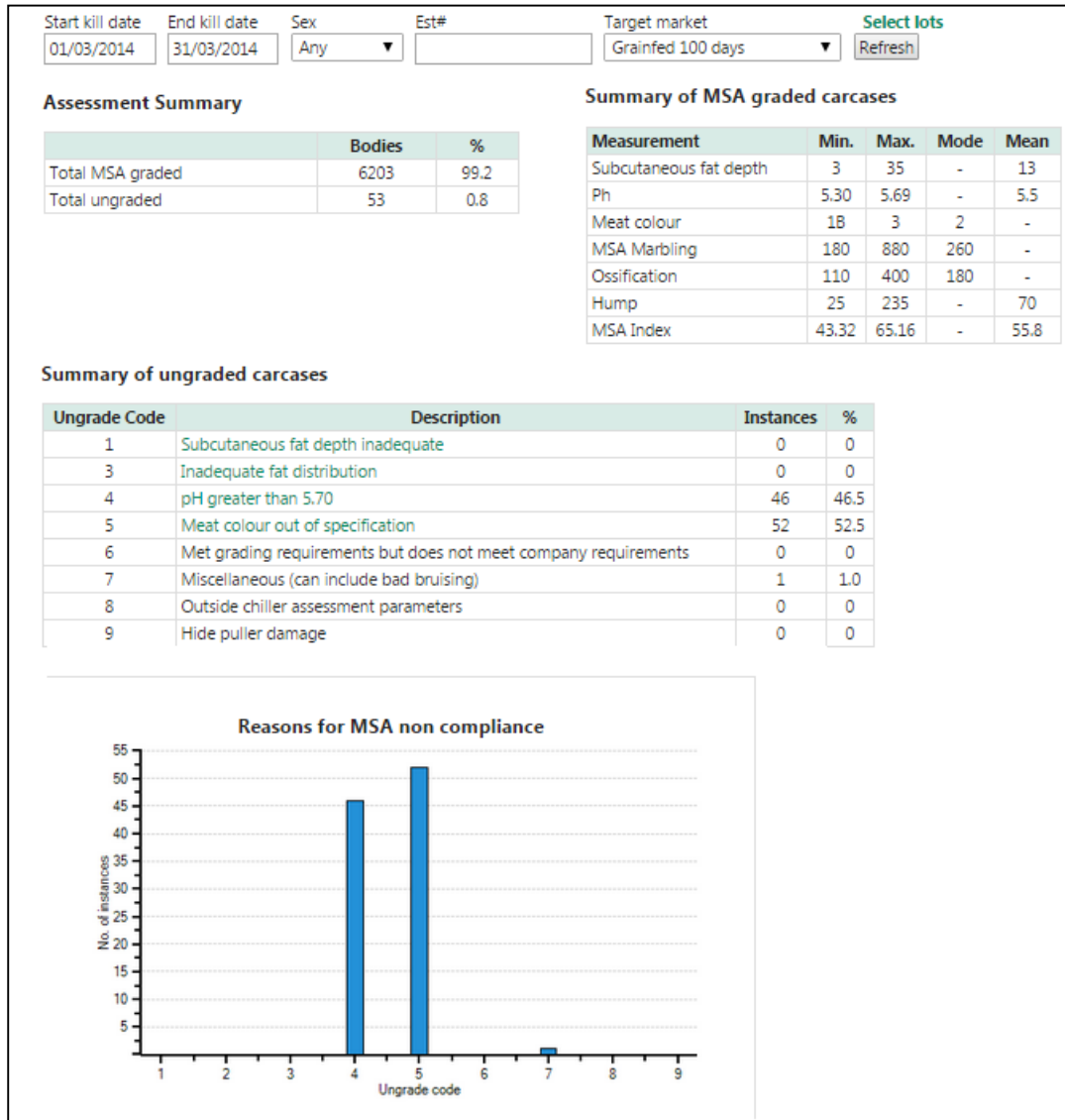
Carcase analysis



Benchmark and compare

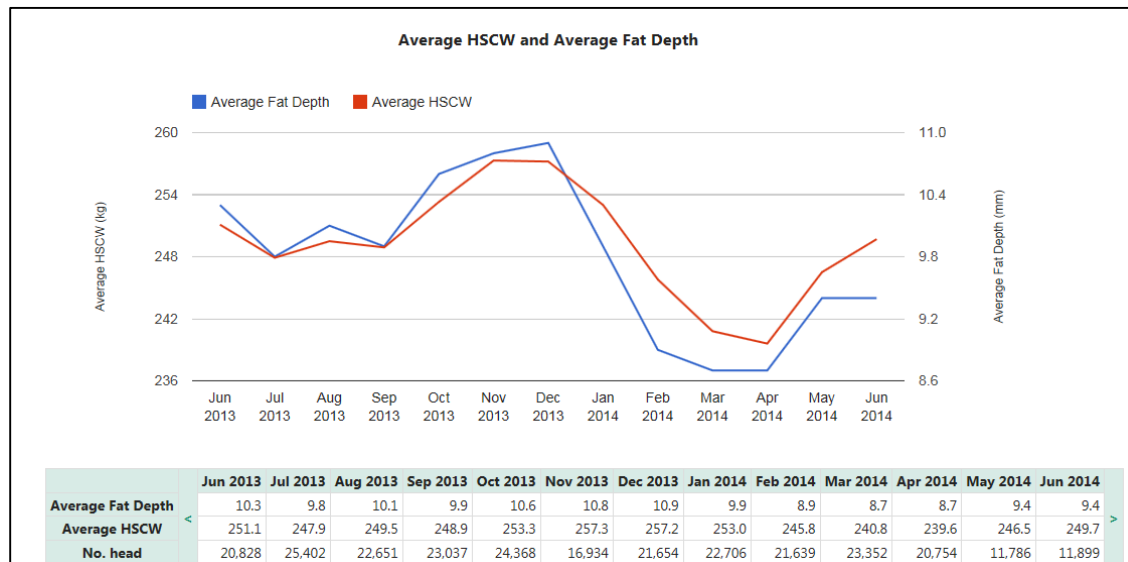


MSA integration

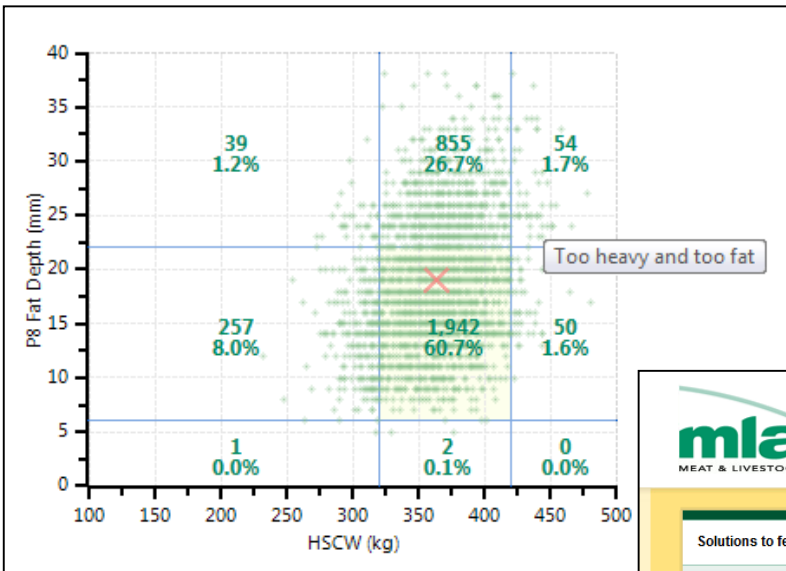


Carcase trends

	Compliance % (Overall)	No. head	Property	Compliance (%)						Location		
				HSCW & P8	HSCW	P8	Dentition	Fat Colour	Boning Group	Shire	Region	State
1	98.3	60	PICTESTV	98.3	98.3	100.0	100.0	100.0	100.0	Barcoo	Mackay	QLD
2	93.3	60	PICTES82	95.0	95.0	100.0	100.0	100.0	98.3	Corangamite	South West	VIC
3	89.7	156	PICTESTP	91.7	91.7	100.0	100.0	100.0	98.1	Bauhinia	Fitzroy	QLD
4	86.9	488	PICTEST3	95.1	95.7	99.2	99.0	100.0	90.4	Campaspe	North East	VIC
5	22.8	294	PICTEST2	34.7	35.4	98.6	100.0	100.0	95.1	Delatite (Benalla & Mansfield)	North East	VIC
6	15.4	7685	PICTEST1	85.5	85.9	99.1	99.6	100.0	99.4	Cardinia	Gippsland	VIC
7	12.2	474	PICTEST6	15.0	16.0	94.5	100.0	100.0	95.2	Greater Geelong	South West	VIC
8	2.1	47	PICTEST4	40.4	57.4	68.1	91.5	100.0	100.0	Corangamite	South West	VIC
9	0.9	218	PICTEST5	15.1	15.1	98.2	100.0	100.0	98.1	Greater Bendigo City	North West	VIC
10	0.0	6	PICTESTK	0.0	0.0	66.7	83.3	0.0	0.0	Delatite (Benalla & Mansfield)	North East	VIC
11	0.0	2	PICTESTA	50.0	100.0	50.0	100.0	0.0	0.0	Campaspe	North East	VIC
	38.3	9490		56.4	62.8	88.6	97.6	81.8	79.5			



Solutions to feedback



[About MLA](#) |
 [Membership](#) |
 [Careers](#) |
 [Contact](#) |
 [News and media](#) |
 [Industry links](#) |
 [Help](#)

[Advanced search](#)
[f](#)
[t](#)
[v](#)
[y](#)

Solutions to feedback

- Cattle
- Weight and fat
 - ▶ Too light and too fat
 - ▶ Too fat
 - ▶ **Too heavy and too fat**
 - ▶ Too light
 - ▶ Correct weight and fat
 - ▶ Too heavy

Too heavy and too fat

You are here: [Home](#) / [Cattle](#) / [Weight and fat](#) / Too heavy and too fat

Compared to the target specifications, carcasses in this box on the grid are too heavy and too fat.

This means retail and primal cuts will be bigger than the processor wants for this market, and will require considerable trimming of excess fat to make them acceptable to their customers.

The cattle were probably just overdone - they would probably have hit the target if they were sold earlier.

Doing it better next time:

- [Improving cattle that are too heavy and too fat for the market](#)
- [Am I aiming at the right target?](#)
- [Help with assessing fatness and carcass weight in live cattle](#)
- [Reducing variation in the sale group](#)
- [Take care before making major changes!](#)

Piloting and roll-out

- 9 companies piloting and evaluating LDL across 15 processing plants
- JBS Southern first supply chain to launch LDL to producers (both beef and sheep)
- Proof of concept animal health and disease module developed in 2014
- Roll-out approach on a supply chain basis



Questions?

- ***All use of MLA publications, reports and information is subject to MLA's terms and conditions.***
- ***Terms of use at www.mla.com.au***

Disclaimer

Information contained in this publication is obtained from a variety of third party sources. To the best of MLA's knowledge the information accurately depicts existing and likely future market demand. However, MLA has not verified all third party information, and forecasts and projections are imprecise and subject to a high degree of uncertainty.

MLA makes no representations and to the extent permitted by law excludes all warranties in relation to the information contained in this publication. MLA is not liable to you or to any third party for any losses, costs or expenses, including any direct, indirect, incidental, consequential, special or exemplary damages or lost profit, resulting from any use or misuse of the information contained in this publication.