

Making the possible practical



Innovation

Sheep Paddock to Plate

James Rowe - MINTRAC 2015
CEO, Sheep CRC



Its expensive

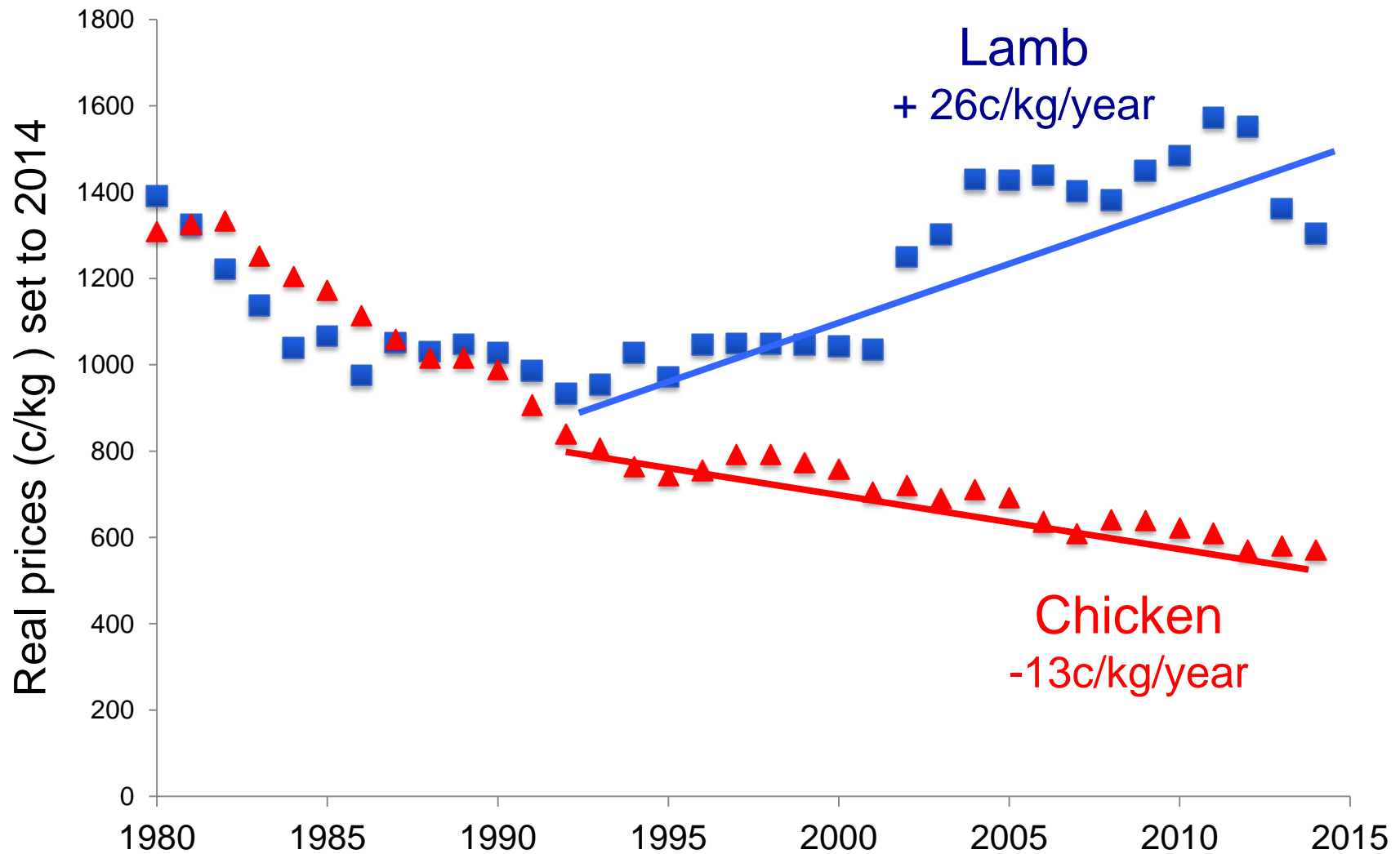
LMY is especially important in lamb



\$30/kg (44% fat trim) —————→ \$54/kg (36% bone)

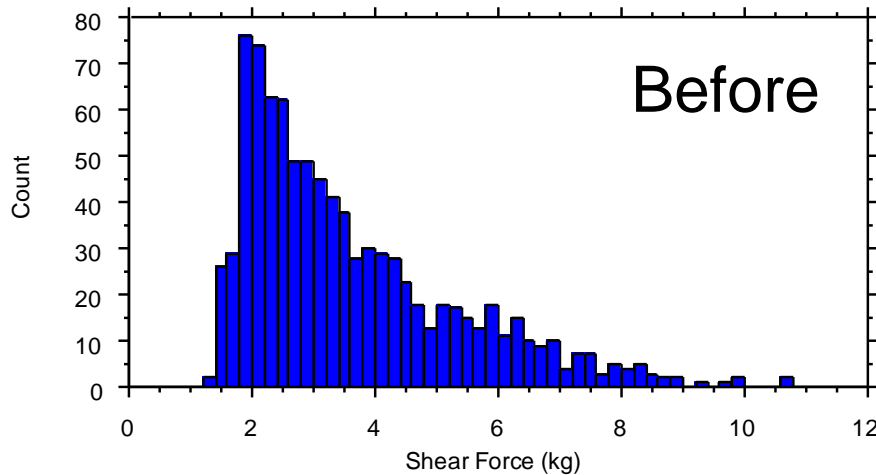
\$84/kg for lean !!

Retail prices of lamb and chicken

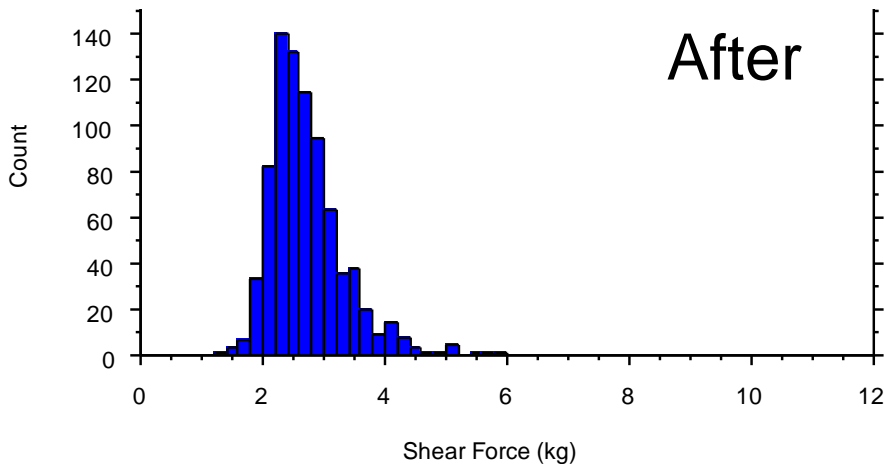


Quality really does matter

Lamb - eating quality (Pethick et al. 2006)



1997/98 retail audit (n=907)



MSA best practise 2006 (n=806)
Electrical stimulation & aging

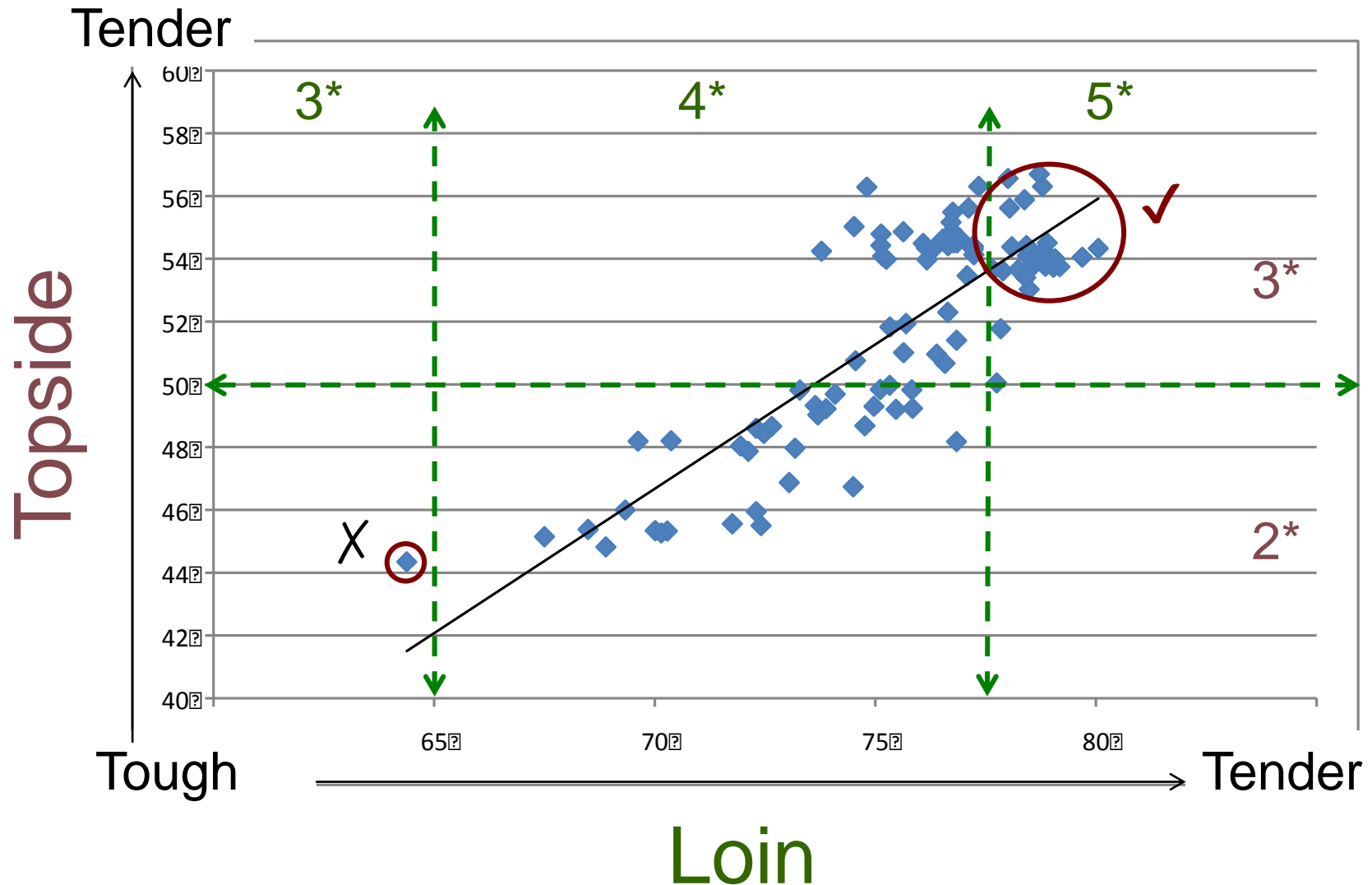
Meat Eating Quality

Consumer testing: Real people – real answers !

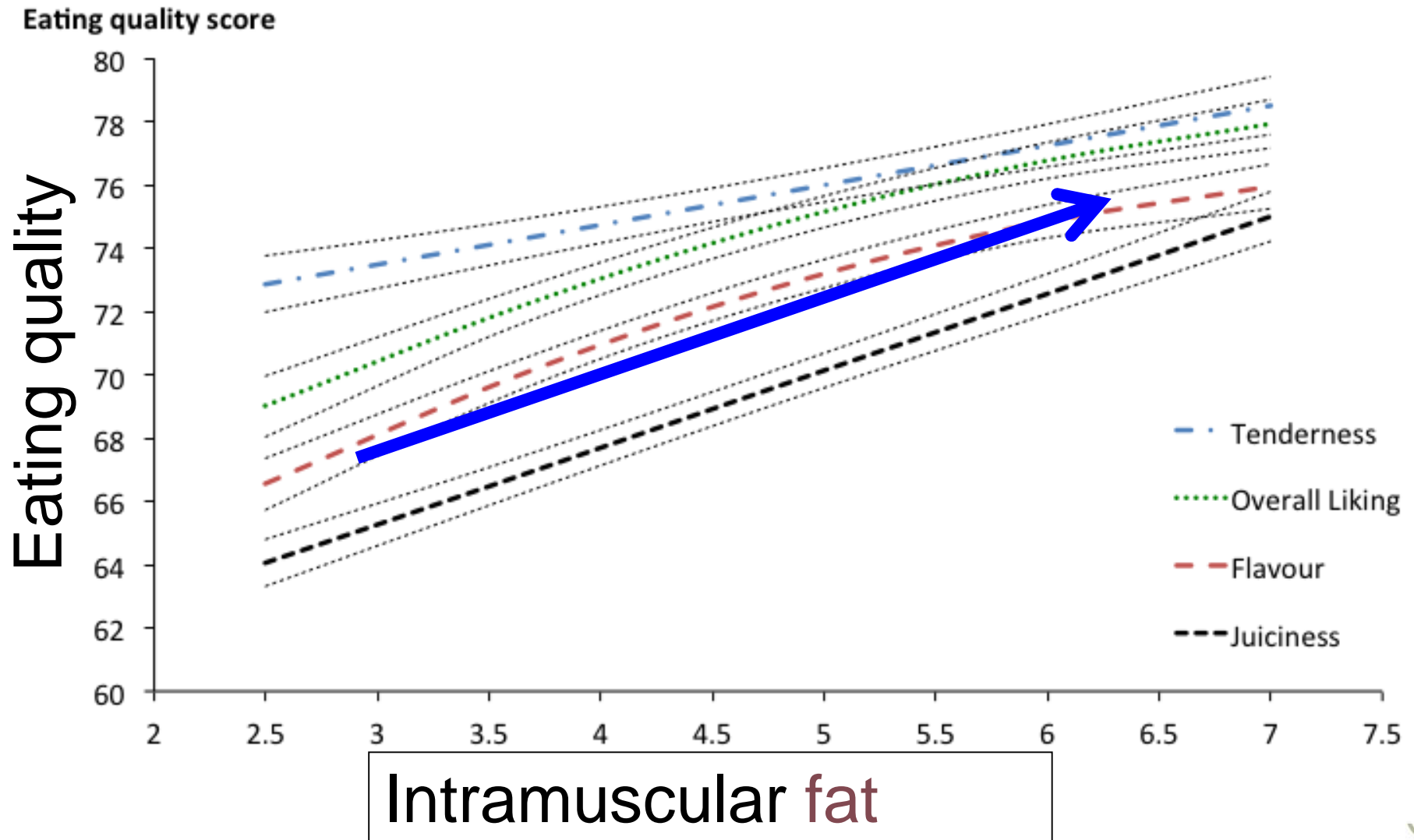


Quality based meat value chain

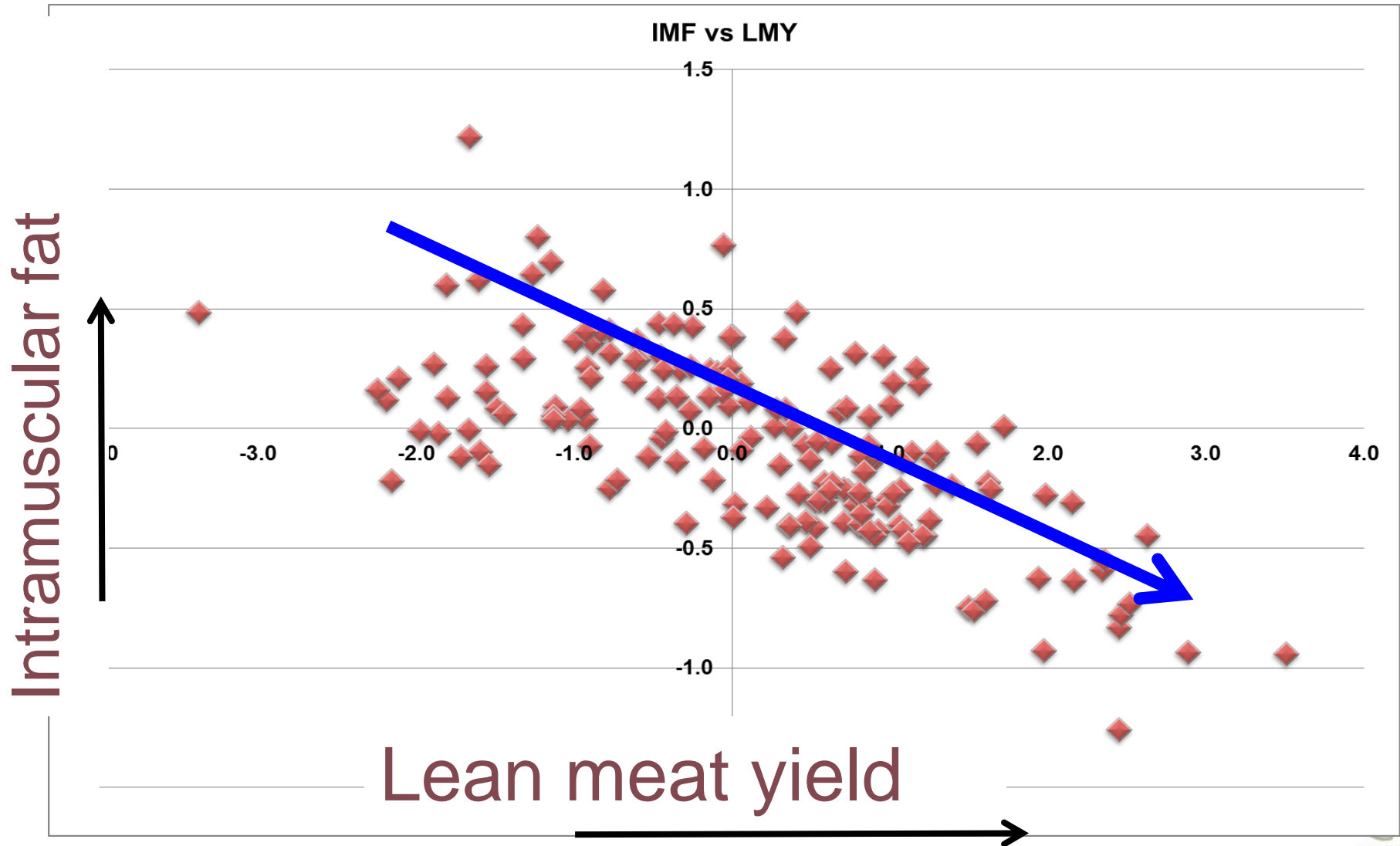
Consumer scoring of meat eating quality



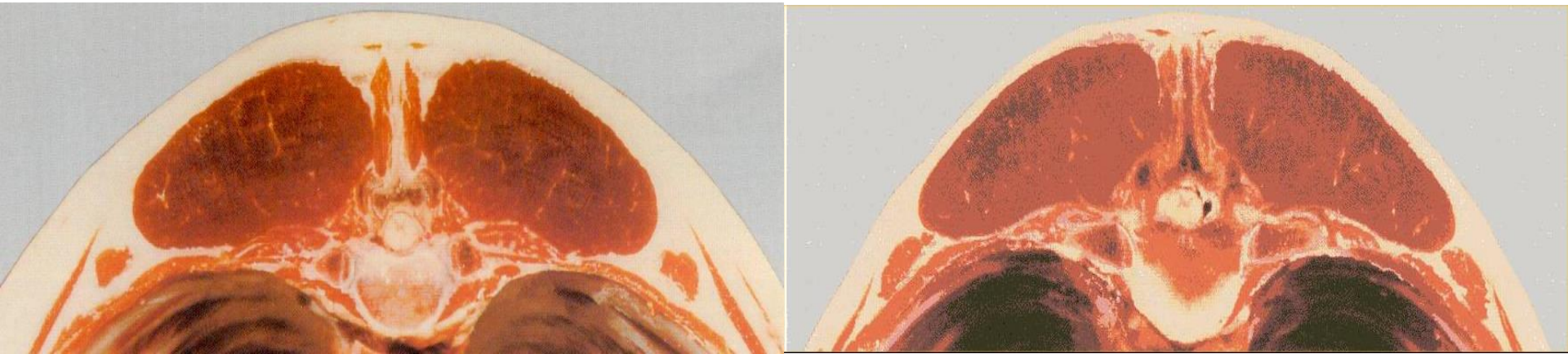
Intramuscular fat – eating quality



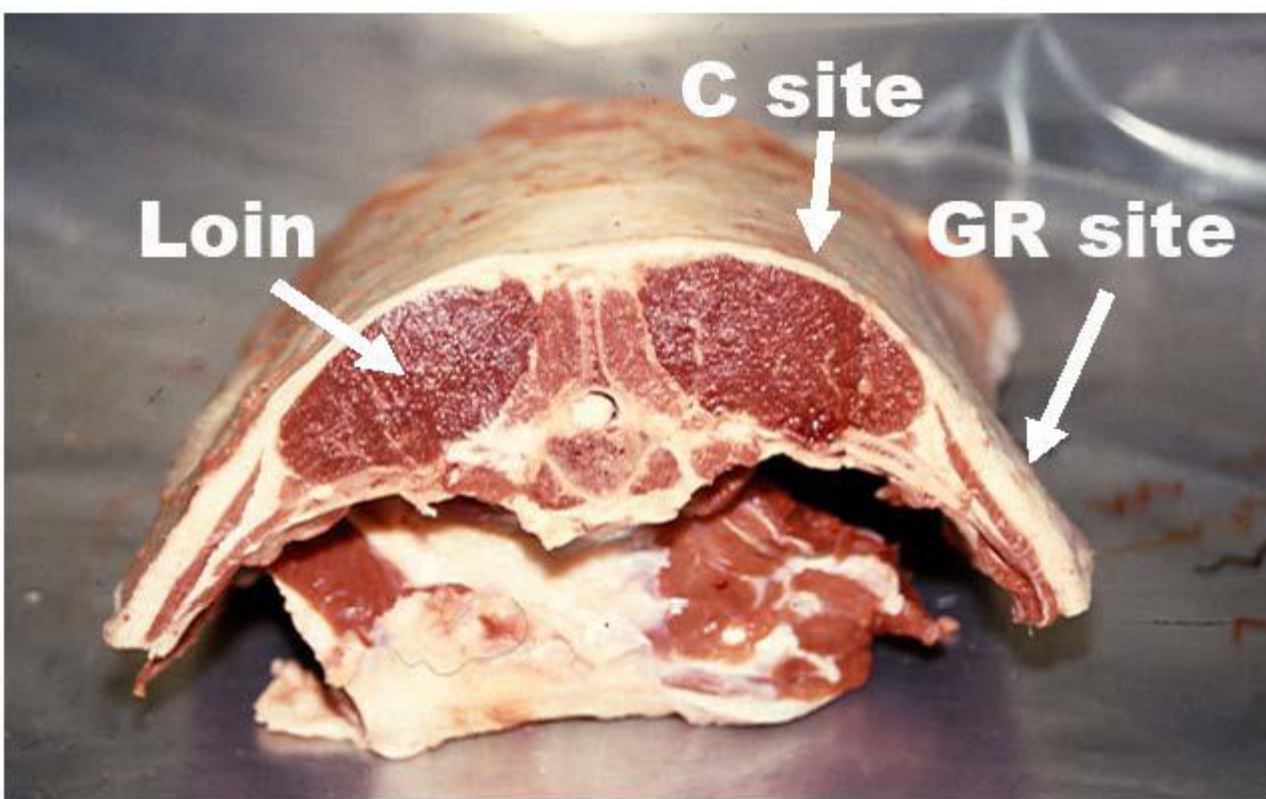
Lean meat yield vs Intramuscular fat



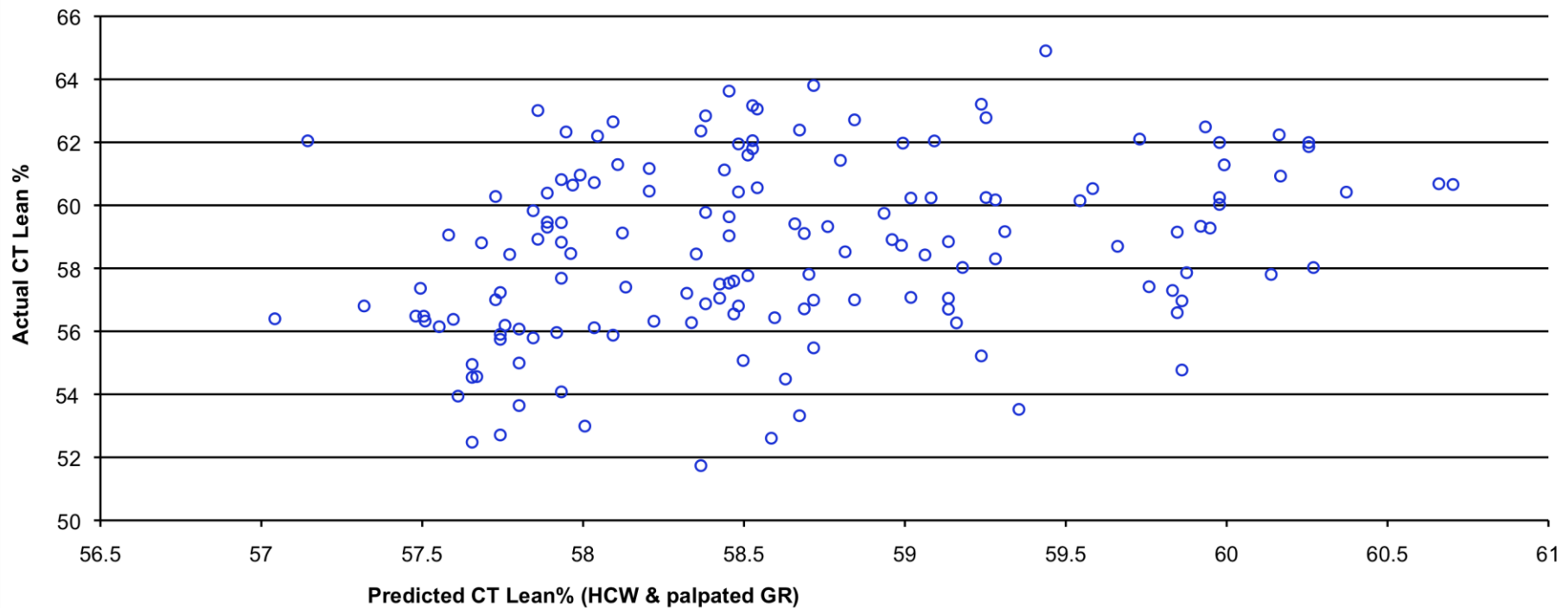
How easy is carcase grading ?



Lean meat yield: Traditional measures

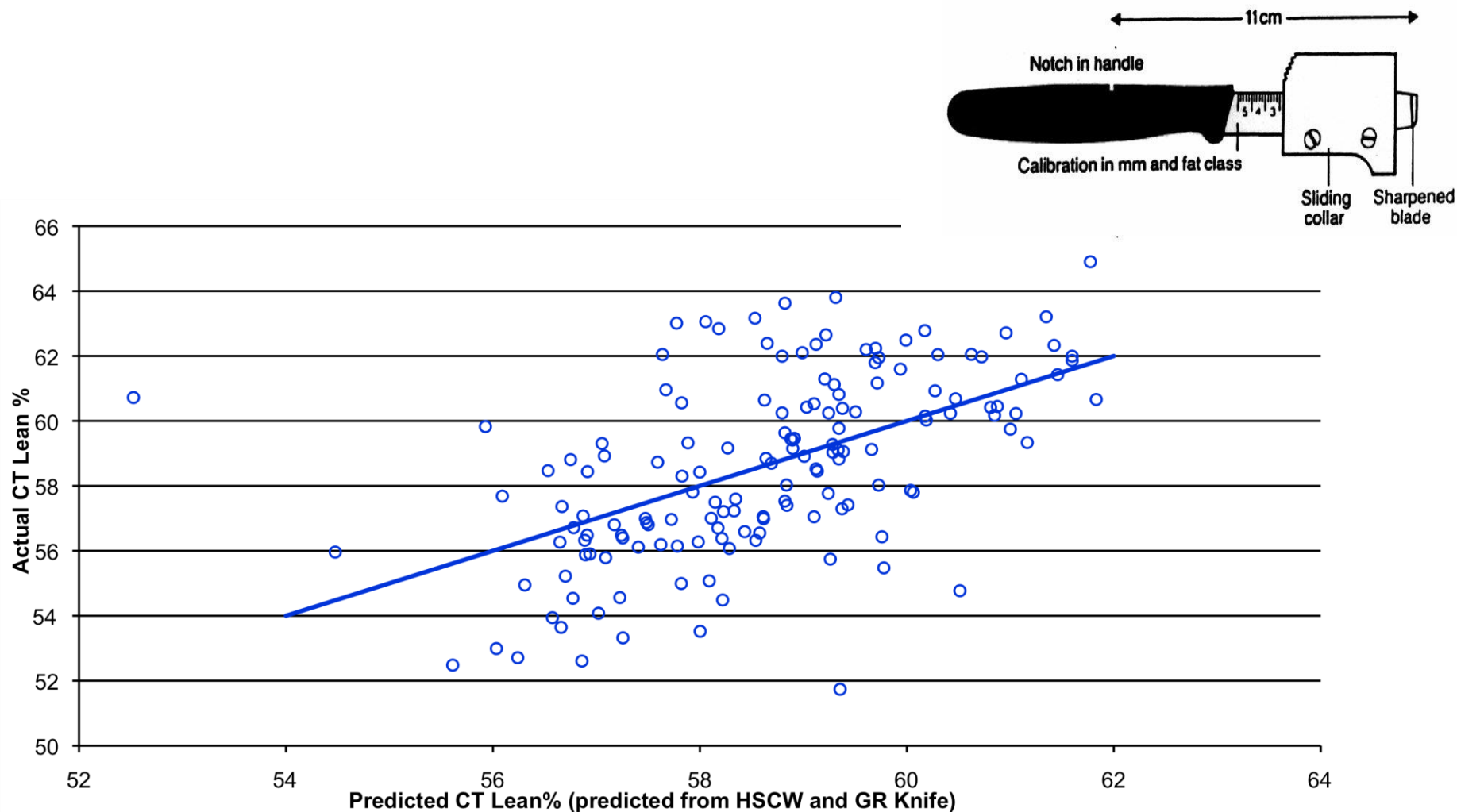


**CURRENT = HCW + palpated 'GR' fat score
to predict LMY**



$R^2 = 0.09$

HCW + GR(mm) to predict LMY



$R^2 = 0.30$

New Probe and X-ray technologies

Carometec probe



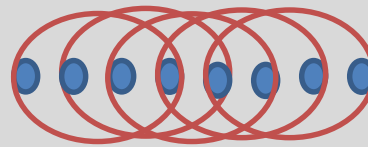
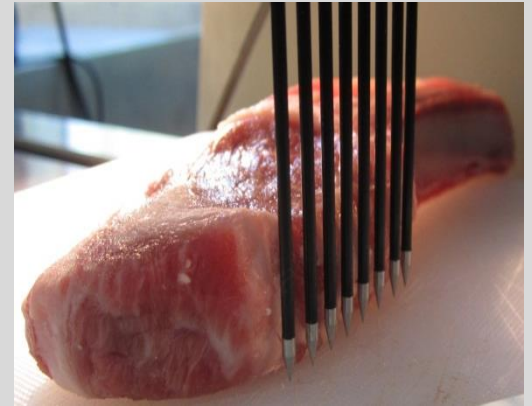
First probe

- GR ✓ (cold)

Second probe

- C fat ?
- C muscle ?
- IMF ?

Carometec impedance probe



Scotts Technology carcass splitter

- 2D Xrays find the ribs
- Have now modified to create a DEXA
- Prototypes have given excellent LMY measurement in NZ
- Graham's LAMBEX talk



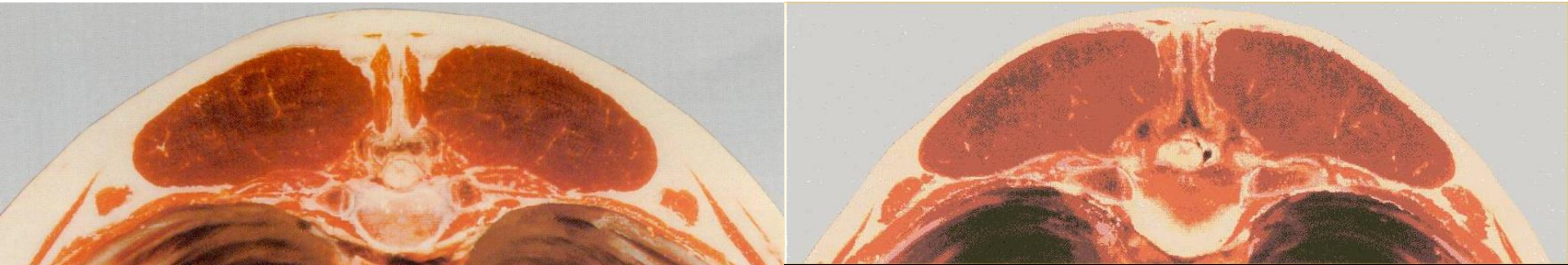
Hyperspectral imaging

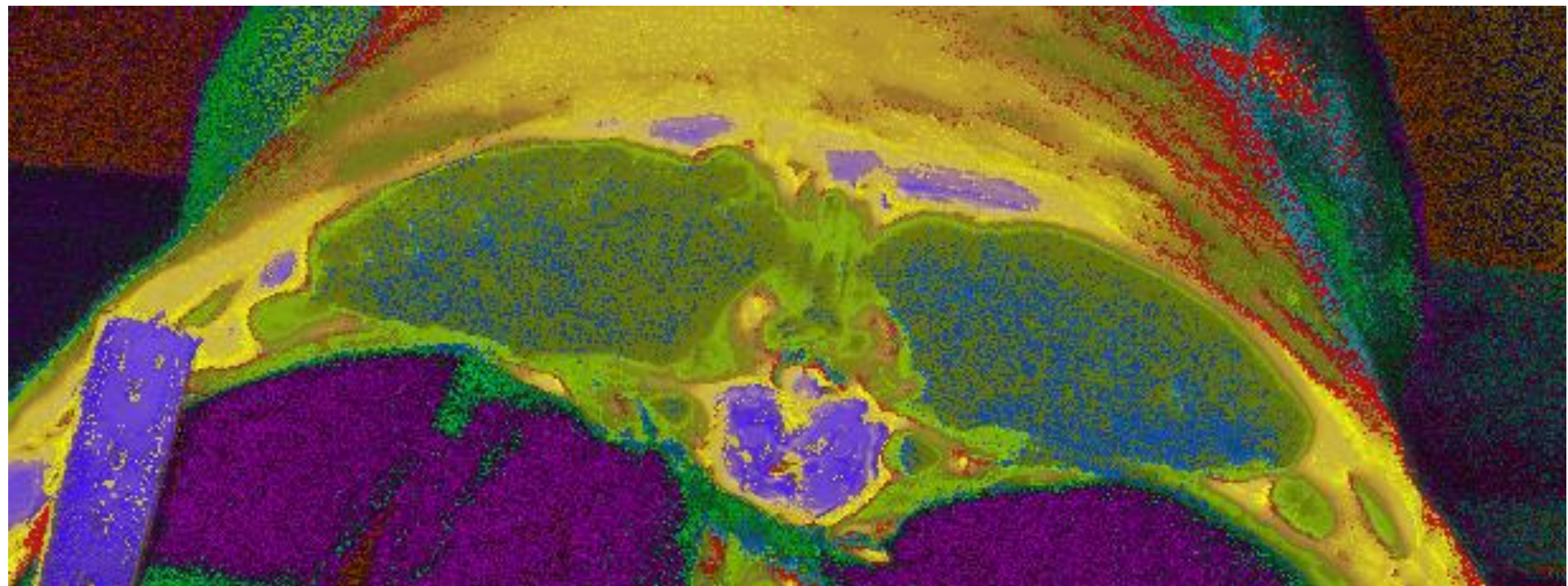
- Takes images at many different wavelengths 'rapidly'
- Already a high correlation in the literature for 'benchtop' IMF in lamb ! (Irish work $r^2=0.88^*$)

*Kamruzzaman et al. (2012) Innovative Food Science & Emerging Technologies 16, 218-226

Hyperspectral imaging (Carometec and NICTA*)

- Imaging cut section of saddle primal
- Eye muscle area and fat area = predictor of yield
- Plus capture IMF and colour ?
- Like the beef VIA chiller assessor unit



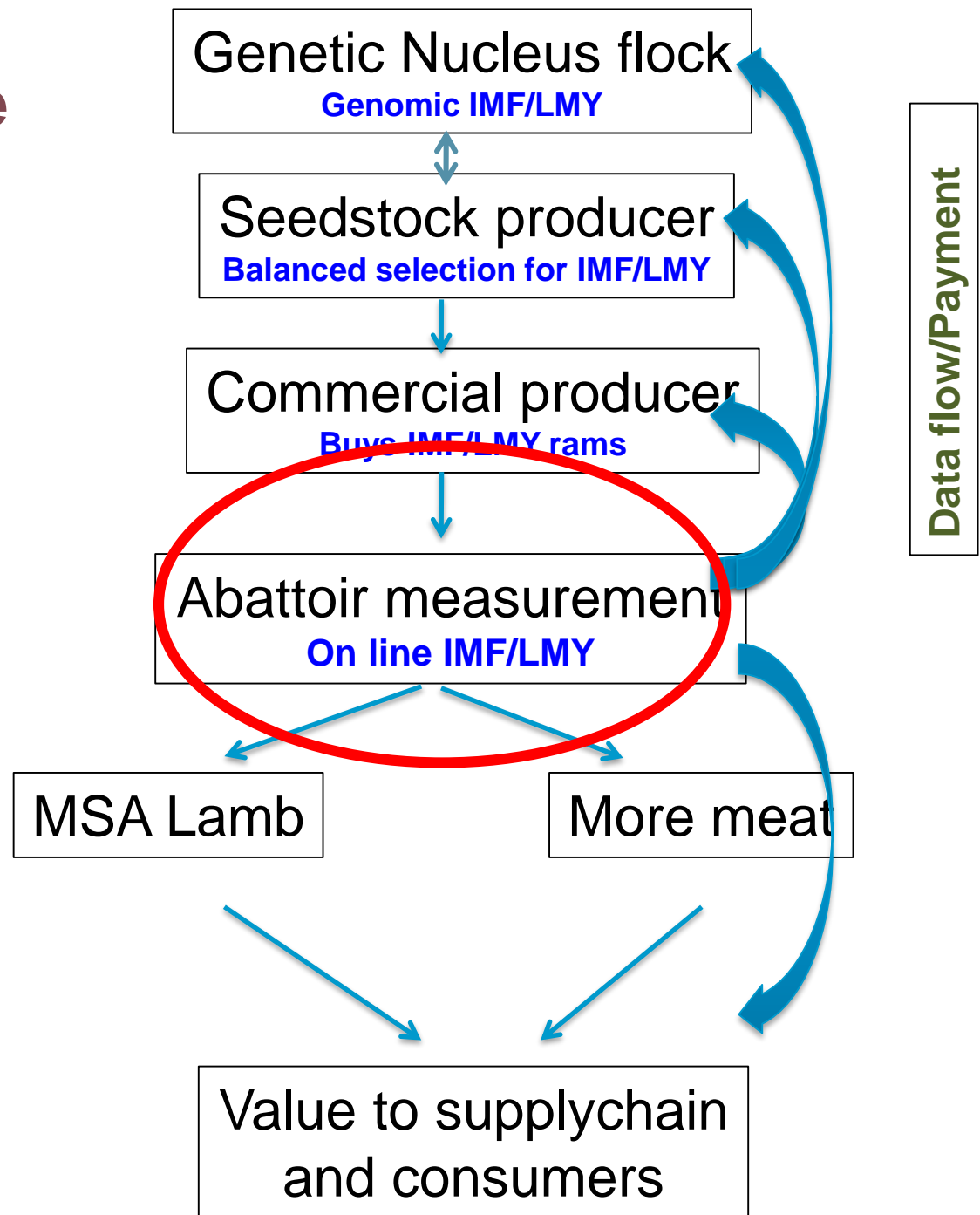


LMY and eating quality

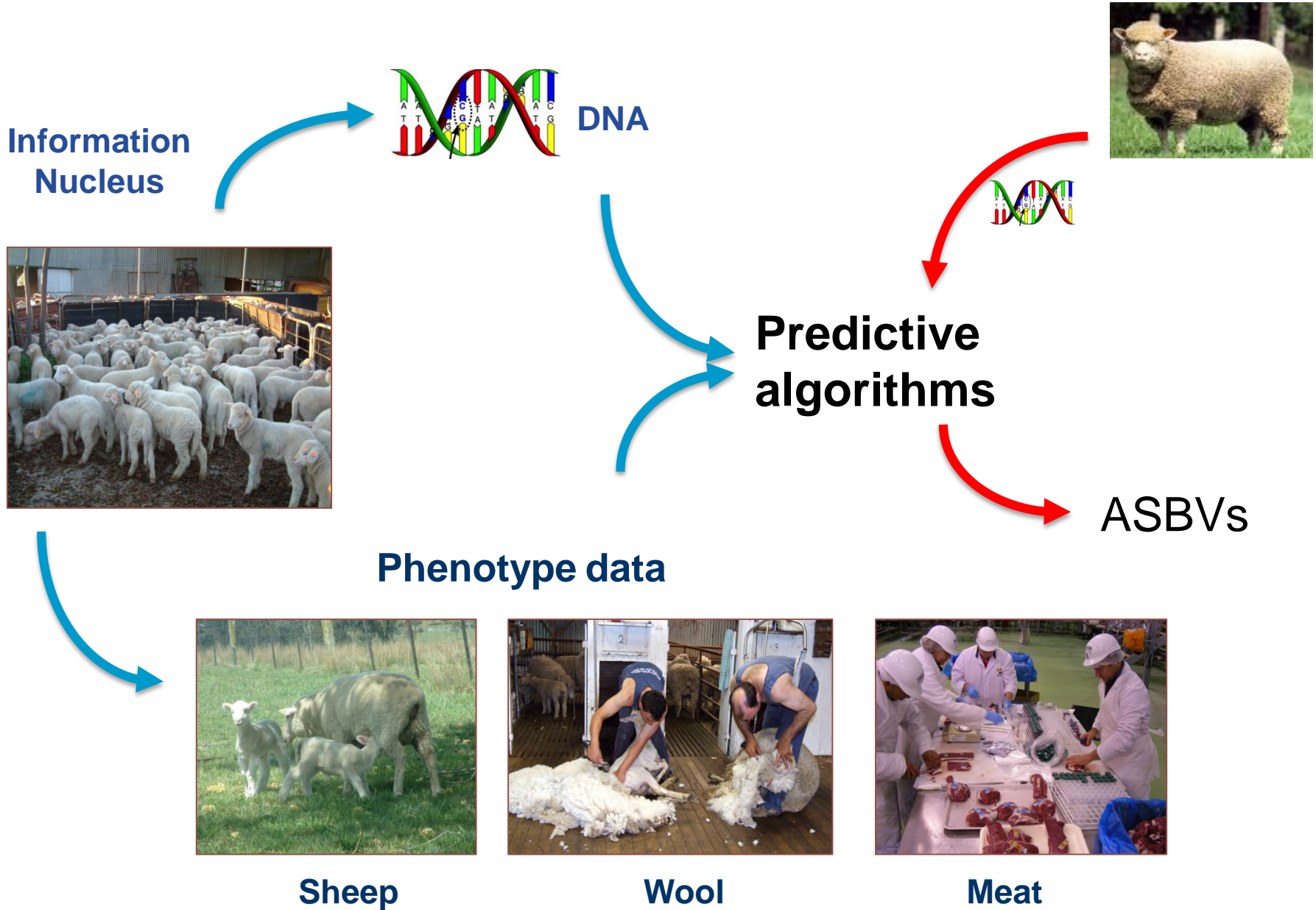
- Carcase grading is a top priority
- New systems within 6 -12 months
- Value comes in sharing data

The value pipeline for IMF & LMY measurement in prime lamb

- IMF: intramuscular fat
- LMY: Lean meat yield



Information Nucleus – innovation platform



Data management

– challenge & opportunity

- Incredible progress in what we can measure
- Massive increases in amount of data collected
- But
 - Still analysing data using Excel and .csv files
 - Still keeping data in secure database ‘silos’
 - Still relying on ‘experts’ for data analysis
 - Still not realising the potential value of data integration
- Challenge – to use data more effectively and more easily

The water analogy – traditional data collection



Data flow today



Drinking from the hydrant is difficult
. . . and you miss a lot



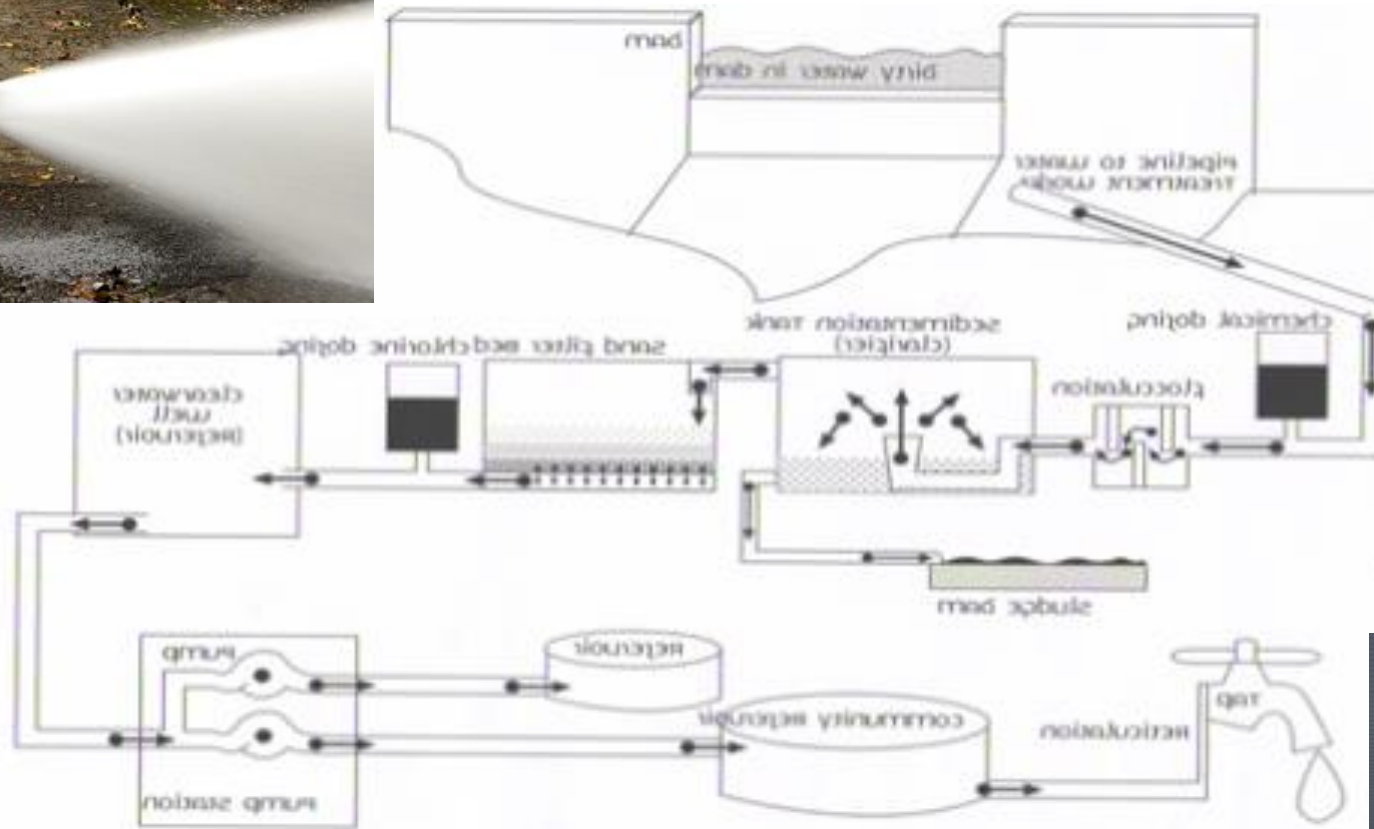
Even with training – still difficult



A smarter option . . .



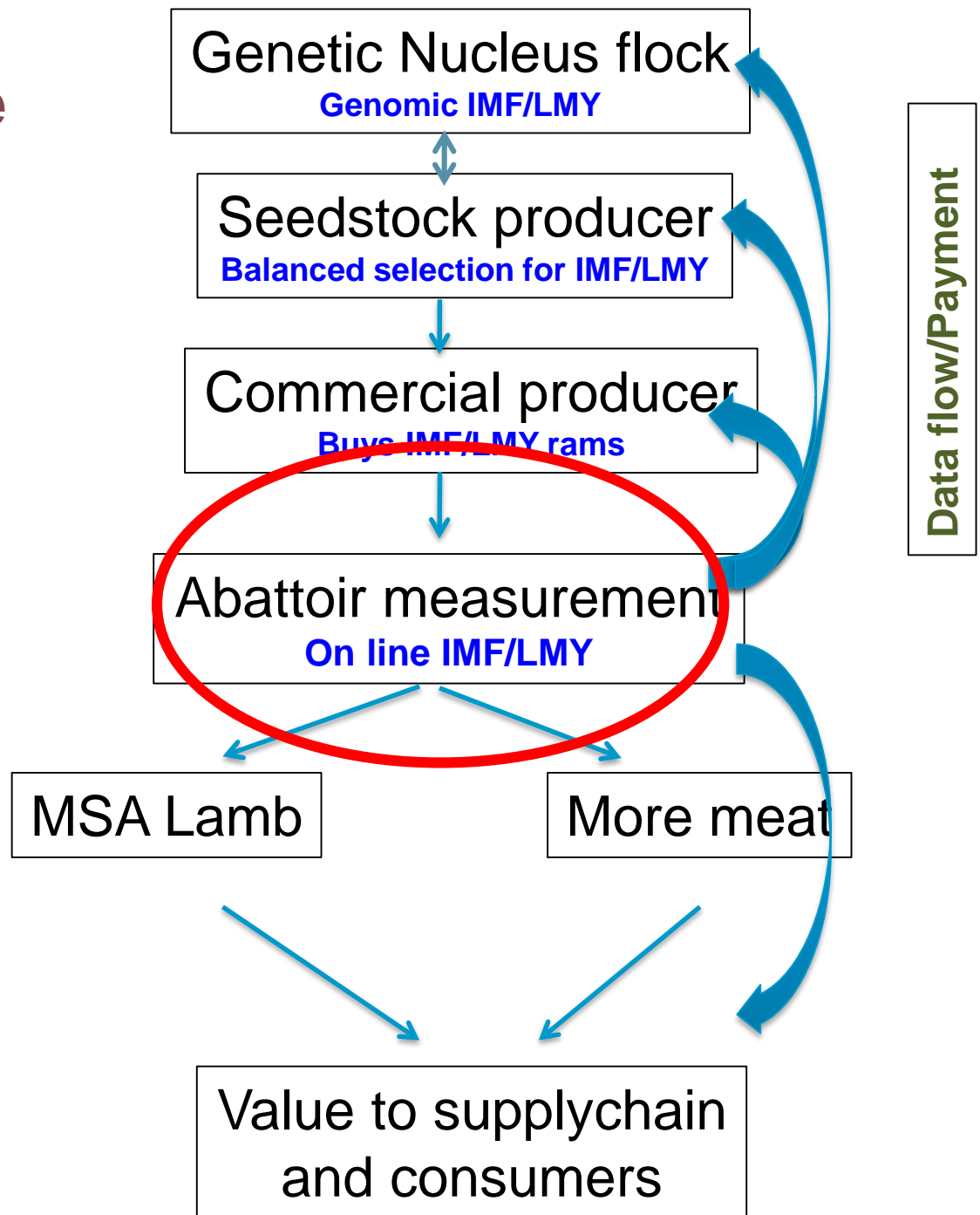
Data management, processing and delivery



Using data effectively and easily

The value pipeline for IMF & LMY measurement in prime lamb

- IMF: intramuscular fat
- LMY: Lean meat yield



CRC Postgraduate Scholarships

Postgraduate Scholarships

PhD & Masters degree : \$32 k/yr

Are you a highly motivated student interested in researching genomics, meat science, animal wellbeing, or rural extension and training?

The Sheep CRC is offering scholarships to PhD and Masters degree candidates for research projects at a choice of sites across the CRC network.

Flexible opportunities are also available for industry-based professionals seeking postgraduate qualifications.

Preference will be given to students intending to enroll at the CRC partner institutions: The University of New England in Armidale, NSW; Murdoch University, WA; The University of Adelaide; The University of Melbourne; and The University of Tasmania.

Opportunities also exist for projects to collaborate with leading commercial and R&D organisations, including Meat & Livestock Australia and Australian Meat Processor Corporation.

The scholarships will provide a tax-free stipend of \$30,000 per annum for two years for Masters or for three years for PhD programs.

The CRC also offers supplementary stipends to students eligible for other government or private agency scholarships, to achieve a stipend total of \$30,000.

The Sheep CRC is a collaboration between Australia's leading sheep research, education and commercial organisations.

The Sheep CRC portfolio includes three programs:

- enhanced sheep wellbeing and productivity;
- quality-based meat value chain; and
- faster affordable genetic gain.

Research programs link genetic and genomic technologies with sheep production and behaviour, meat science and meat processing.

CRC FOR
SHEEP
INDUSTRY
INNOVATION



Postgraduate research projects must be closely aligned with the CRC's Projects and applicants are advised to consult with the Program and Project leaders in developing their applications.

For further information

contact Dr Graham Gardner at Murdoch University on
08 9360 2264 or
G.Gardner@murdoch.edu.au

Go to **www.sheepcrc.org.au** for application forms, terms and conditions, information on research programs and potential projects.

**Applications close
10th April 2015**

The CRC for Sheep Industry Innovation is supported under the Australian Government's Cooperative Research Centres Program



Social and cultural diversity and commitment to the principles of Equal Employment Opportunity and the provision of a smoke-free environment are policies of the CRC and University of New England.