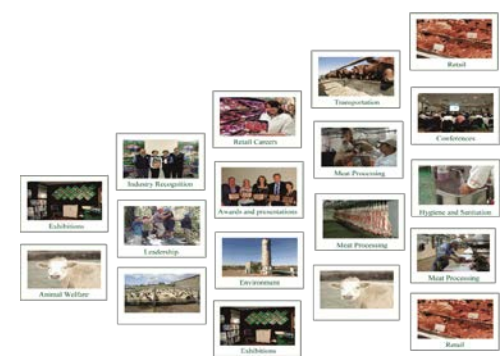




# MINTRAC

NATIONAL MEAT INDUSTRY TRAINING ADVISORY COUNCIL LIMITED

## ISMAA Mentoring program



Providing highly-valued education and training products and services to the Australian meat industry



# MINTRAC

NATIONAL MEAT INDUSTRY TRAINING ADVISORY COUNCIL LIMITED

	Accountability	Develop Individual Mentoring plan	Ongoing Learning	Meetings	Reporting	Results
Apprentice/Trainee	<p>Learn and complete qualification within required timeframes.</p> <p>Apply learning on the job.</p>	<p>Make commitment.</p> <p>Understand Qualification.</p>	<p>Attend off job training.</p> <p>Meet agreed study goals.</p>	<p>Attend regular mentoring meetings as required.</p> <p>Attend RTO training.</p>	<p>Submit unit qualification requirements on time.</p> <p>Report back to manager when unit standard achieved or not achieved.</p>	<p>Gain a broad based skill set.</p> <p>Progress steadily and achieve results.</p> <p>Qualify as a tradesperson.</p>
Mentor	<p>Engage learner.</p> <p>Build relationship and challenge.</p>	<p>Hold initial meeting and develop study and life goals with mentee.</p>	<p>Technical and personal support.</p> <p>Link with RTO.</p>	<p>Minimum 6 visits with mentee.</p>	<p>Extra support for Apprentice/ Trainee when required.</p>	<p>Increased productivity/ retention.</p> <p>Value add for the business, WHS, and task ownership.</p>



