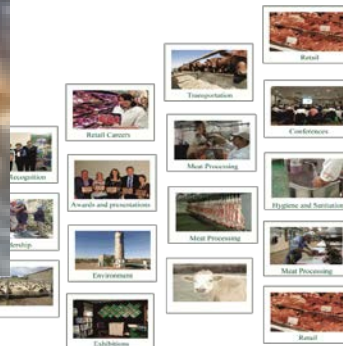




MINTRAC

NATIONAL MEAT INDUSTRY TRAINING ADVISORY COUNCIL LIMITED

Look Mum no hands !



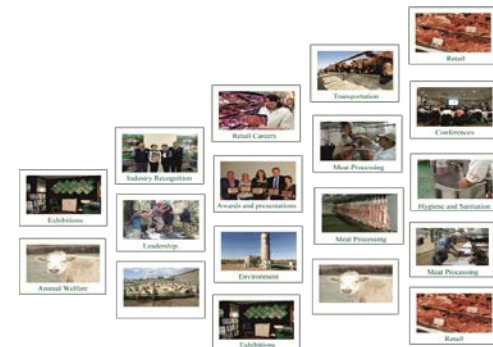


MINTRAC

NATIONAL MEAT INDUSTRY TRAINING ADVISORY COUNCIL LIMITED

Capturing Health data

- Why is this important?
- What is gathered currently?
- Who gathers the data ?
- How is this gathered?
- What are the barriers to capturing health data accurately?



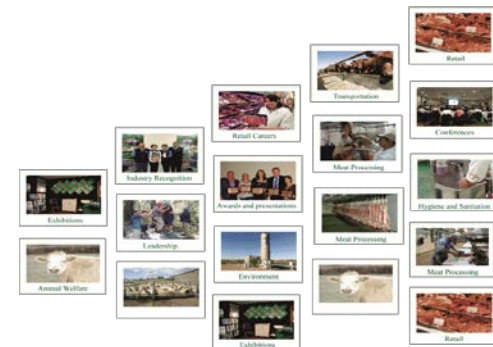


MINTRAC

NATIONAL MEAT INDUSTRY TRAINING ADVISORY COUNCIL LIMITED

Your answers to the questions!

- Reasons for gathering data
- What do you gather?.....
- Who gathers the data?.....
- How is it recorded?





MINTRAC

NATIONAL MEAT INDUSTRY TRAINING ADVISORY COUNCIL LIMITED

Problems with and barriers to gathering accurate data

These are problems with gathering mutton and lamb data especially;

- Speed of the chain
- Recording becomes a distraction to the inspection task
- Hygiene issues
- Collating carcass and viscera data
- Relating data to relevant parties





MINTRAC

NATIONAL MEAT INDUSTRY TRAINING ADVISORY COUNCIL LIMITED

Part solution to this problem: Voice recognition

- Recognition of partners Animal Health Australia and AMPC
- The tasks for voice recognition and recording software;
 - Recognise individual inspectors
 - Recognise lot number
 - Recognise diseases/conditions as called
 - Give feedback to recorder
 - Accept instructions
 - Sum and collate data
 - Report data





MINTRAC

NATIONAL MEAT INDUSTRY TRAINING ADVISORY COUNCIL LIMITED

Progress to date

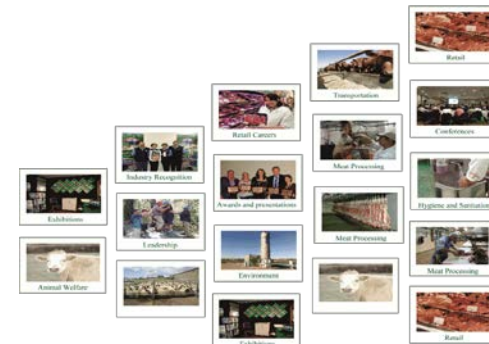
- Noise cancelling microphones work
- Hearing protection standard earphones work
- Voice recognition software 95% accuracy
- Data collection software works
- Wireless connection works up to 10m from a base computer
- Reporting software works





MINTRAC

NATIONAL MEAT INDUSTRY TRAINING ADVISORY COUNCIL LIMITED



Providing highly-valued education and training products and services to the Australian meat industry



MINTRAC

NATIONAL MEAT INDUSTRY TRAINING ADVISORY COUNCIL LIMITED

Where to from here ?

- Full blown trial with viscera inspector in Victoria
- One moth trial with viscera and carcass inspector in a mutton works
- Roll out to a plant for a trial in a sheep works
- Roll out for a beef plant recording hide grading and health data.

